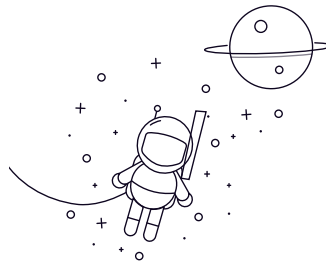
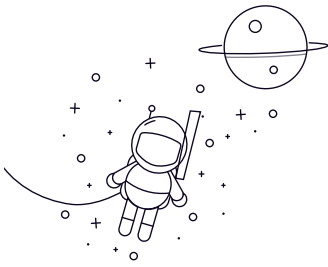


# NJ1000 Series



select	Anfrage	Bezeichnung	Hauptabmessungen (mm)					Grundtragzahlen (KN)		Begrenzte Geschwindigkeit Gewicht (U/min)	
			D	D	B	RS min	rs1min	Dynamisch (Cr)	Statisch (Cor)	Fett	Bohrinsel (kg)
NJ1005	25	47	12	0.6	0.3	15.1	14.1	16000	19000	0.092	
NJ1006	30	55	13	1	0.6	19.7	19.6	14000	16000	0.13	
NJ1007	35	62	14	1	0.6	22.6	23.2	12000	15000	0.179	
NJ1008	40	68	15	1	0.6	27.3	29	11000	13000	0.22	
NJ1009	45	75	16	1	0.6	31	34	9900	12000	0.28	
NJ1010	50	80	16	1	0.6	32	36	8900	11000	0.295	
NJ1011	55	90	18	1.1	1	37.5	44	8200	9700	0.442	
NJ1012	60	95	18	1.1	1	40	48.5	7500	8800	0.474	
NJ1013	65	100	18	1.1	1	41	51	7000	8200	0.485	
NJ1014	70	110	20	1.1	1	58.5	70.5	6500	7600	0.699	
NJ1015	75	115	20	1.1	1	60	74.5	6100	7100	0.738	
NJ1016	80	125	22	1.1	1	72.5	90.5	5700	6700	0.98	
NJ1017	85	130	22	1.1	1	74.5	95.5	5400	6300	1.03	
NJ1018	90	140	24	1.5	1.1	88	114	5100	5900	1.33	
NJ1019	95	145	24	1.5	1.1	90.5	120	4800	5600	1.4	
NJ1020	100	150	24	1.5	1.1	93	126	4600	5400	1.45	
NJ1021	105	160	26	2	1.1	105	142	4300	5100	1.84	
NJ1022	110	170	28	2	1.1	131	174	4100	4800	2.33	
NJ1024	120	180	28	2	1.1	139	191	3800	4400	2.44	
NJ1026	130	200	33	2	1.1	172	238	3400	4000	3.69	
NJ1028	140	210	33	2	1.1	176	250	3200	3800	4.05	
NJ1030	150	225	35	2.1	1.5	202	294	3000	3500	4.77	