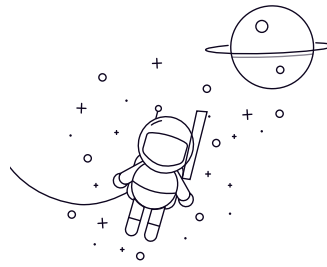
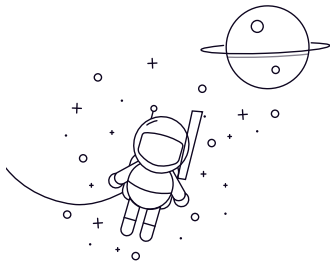


N200 Series



select	Anfrage	Bezeichnung	Hauptabmessungen (mm)					Grundtragzahlen (KN)		Begrenzte Geschwindigkeit Gewicht (U/min)	
			D	D	B	RS min	rs1min	Dynamisch (Cr)	Statisch (Cor)	Fett	Bohrinsel (kg)
N208	40	80	18	1.1	1.1	43.5	43	9400	11000	0.37	
N209	45	85	19	1.1	1.1	46	47	8400	9900	0.423	
N210	50	90	20	1.1	1.1	48	51	7600	9000	0.46	
N211	55	100	21	1.5	1.1	58	62.5	6900	8200	0.626	
N212	60	110	22	1.5	1.5	68.5	75	6400	7600	0.802	
N213	65	120	23	1.5	1.5	84	94.5	5900	7000	1	
N214	70	125	24	1.5	1.5	83.5	95	5500	6500	1.1	
N215	75	130	25	1.5	1.5	96.5	111	5100	6000	1.21	
N216	80	140	26	2	2	106	122	4800	5700	1.47	
N217	85	150	28	2	2	120	140	4500	5300	1.83	
N218	90	160	30	2	2	152	178	4300	5000	2.25	
N219	95	170	32	2.1	2.1	166	195	4000	4700	2.72	
N220	100	180	34	2.1	2.1	183	217	3800	4500	3.26	
N221	105	190	36	2.1	2.1	201	241	3600	4300	3.87	
N222	110	200	38	2.1	2.1	240	290	3400	4000	4.54	
N224	120	215	40	2.1	2.1	260	320	3200	3700	5.46	
N226	130	230	40	3	3	270	340	2900	3400	6.17	
N228	140	250	42	3	3	310	400	2700	3100	7.72	
N230	150	270	45	3	3	345	435	2500	2900	9.72	