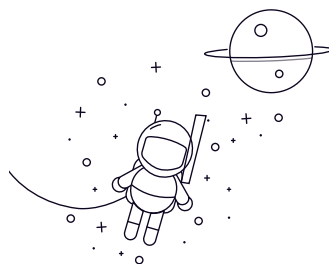
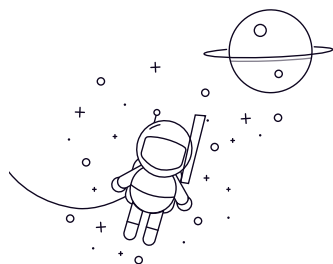


NF300 Series



select	Anfrage	Bezeichnung	Hauptabmessungen (mm)					Grundtragzahlen (KN)		Begrenzte Geschwindigkeit Gewicht (U/min) (kg)	
			D	D	B	RS min	rs1min	Dynamisch (Cr)	Statisch (Cor)	Fett	Bohrinsel
NF303E	17	47	14	1	0.6	24.65	21.16	13000	15000	0.139	
NF304E	20	52	15	1.1	0.6	23.1	19.2	14000	17000	0.149	
NF305E	25	62	17	1.1	1.1	38.5	35.8	9000	12000	0.24	
NF306E	30	72	19	1.1	1.1	49.2	48.2	8000	10000	0.38	
NF307E	35	80	21	1.5	1.1	62	63.2	7000	9000	0.54	
NF308E	40	90	23	1.5	1.5	76.8	77.8	6300	8000	0.65	
NF309E	45	100	25	1.5	1.5	93	98	5600	7000	0.95	
NF310E	50	110	27	2	2	105	112	5300	6700	1.2	
NF311E	55	120	29	2	2	128	138	4800	6000	1.61	
NF312E	60	130	31	2.1	2.1	142	155	4500	5600	1.94	
NF313E	65	140	33	2.1	2.1	170	188	4000	5000	2.42	
NF314E	70	150	35	2.1	2.1	195	220	3800	4800	2.9	
NF315E	75	160	37	2.1	2.1	228	260	3600	4500	3.59	
NF316E	80	170	39	2.1	2.1	245	270	3400	4300	3.9	
NF317E	85	180	41	3	3	265	280	3200	4000	5.2	
NF318E	90	190	43	3	3	290	320	3000	3800	6.17	
NF319E	95	200	45	3	3	320	350	2800	3600	6.92	
NF320E	100	215	47	3	3	355	380	2600	3200	8.24	
NF321E	105	225	49	3	3	390	420	2200	3000	9.9	
NF322E	110	240	50	3	3	415	470	2000	2800	11.2	
NF324E	120	260	55	3	3	440	552	1900	2600	14.1	